

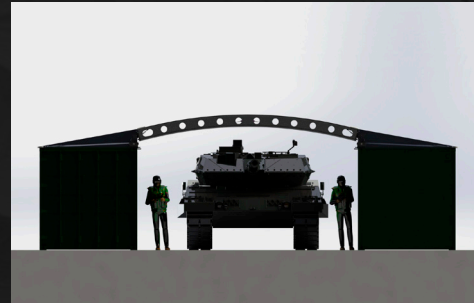
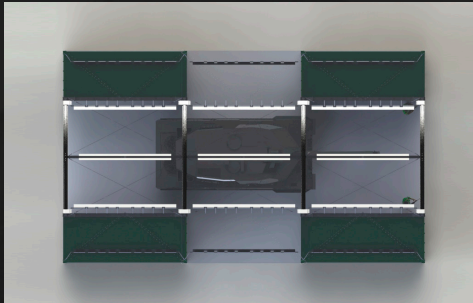
# MODEL M1

## RAPID CONTAINER BASED SHELTERING SOLUTION

The M1 is designed to be used for many purposes: Examples are a mobile event shelter, a storage facility, a ballistic equipped checkpoint or as a field command centre. Due to its container based attachment it is rapidly deployable in any situation. It can be equipped with ballistic and stealth protection against radar and infra-red threats. The length of the shelter can be expanded to any size.

### RECOMMENDED USAGE:

CHECKPOINT, STORAGE, MAINTENANCE FACILITIES



### TECHNICAL DESCRIPTION:

<b>Model:</b>	M1
<b>Width:</b>	5 meters free span (+ containers)
<b>Height:</b>	3 meters
<b>Length:</b>	Min. 6 meters: scalable in 3 to 6 meter sections
<b>Door options:</b>	No-door/straight end with roller/personnel door
<b>Side doors:</b>	N/A
<b>Attachment:</b>	Containers
<b>Frame material:</b>	EN AW 6082 T6 Aluminium
<b>Foundation material:</b>	Hot galvanized steel
<b>Canvas material:</b>	PVC/Hard-top
<b>Inner-liner material:</b>	Optional
<b>Design standards:</b>	EN1990, EN1991, EN1999, EN1993, EN13782
<b>Wind load resistance:</b>	Up to 50m/s*
<b>Snow load resistance:</b>	Up to 150kg/m2*
<b>Assembly time:</b>	2-3h (3 man crew)
<b>Disassembly time:</b>	2-3h (3 man crew)
<b>Turn-key pack:</b>	Included: No other assembly equipment needed

## M-FAMILY

The M-Family consists of 7 different sized mobile weather shelters for demanding needs. They are all based on the same patented technology to enable rapid deployment in any situation without heavy machinery. They are designed for extreme usage by the industry, defence and crisis management in any climate.

\*KT-Shelters are easily adjustable to meet the local weather requirements. From normal to extreme arctic climates. Eurocode 1/ wind load standard EN 1991-1-4+AC+A1 for wind loads and snow load. All provided values are based on Terrain Category IV

